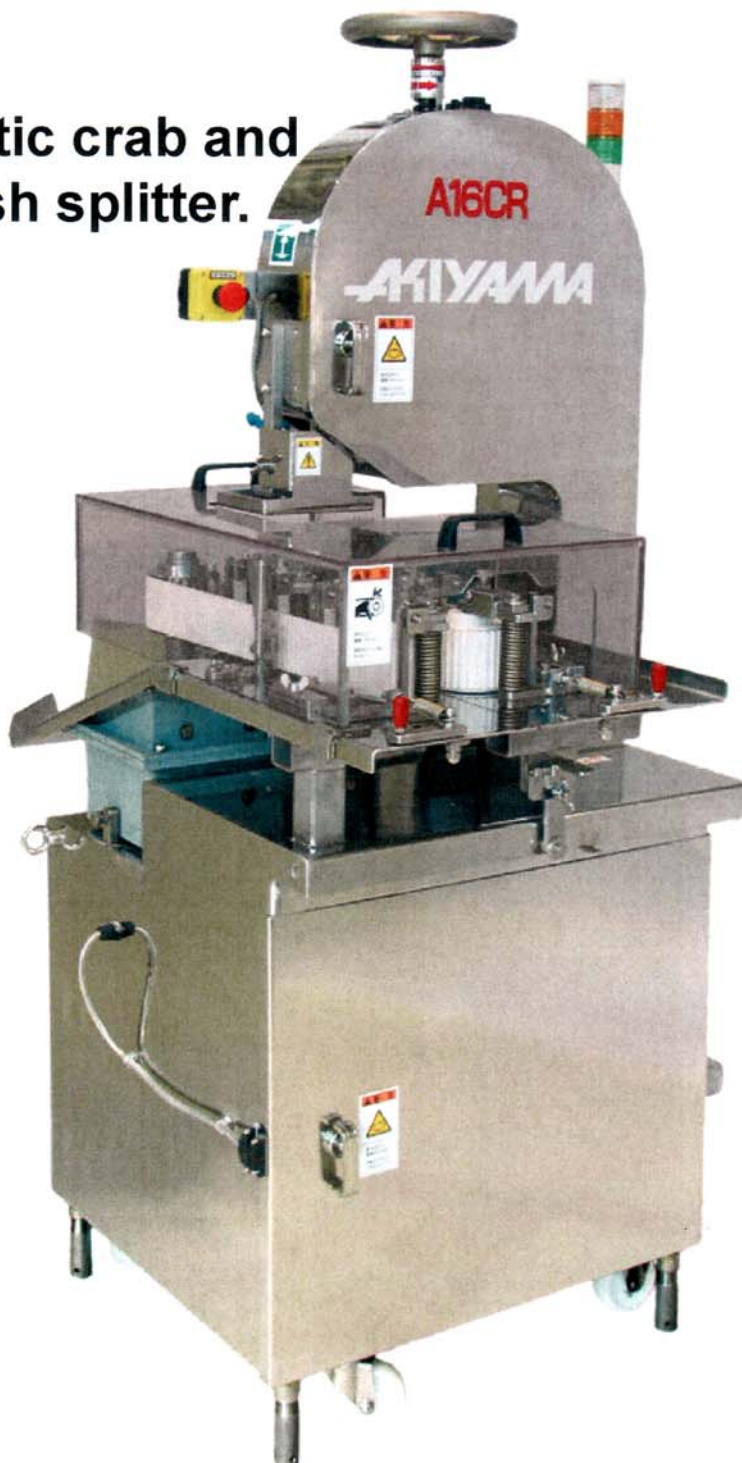


AKIYAMA

Automatic Frozen Fish & Shellfish Splitter

A16-CR

Automatic crab and small fish splitter.



High yields and produce a quality cut automatically.

Even a high-speed cut, frozen products will not damage its quality.

High-efficient machine with no adjustment needed.

Automatic
Frozen Fish & Shellfish
Splitter

A16-CR

Automatic centering device

With the automatic centering device, crabs and fishes are divided into two exactly in the middle without any adjustment, regardless of the shape, size and type of crab legs. Combined with the automatic Crab Leg Shell Cutter (SH-2C), it is possible to process high added value in response to consumer needs. The operation is simple, just place the crab between the feeding belt devices of A16-CR, you can easily divide crabs and fishes into half. With separation attachment for crab shoulder meat, you can prevent re-joint after cutting process.

Safety design

Emergency stop button is equipped as standard, so when you press the button, the rotation of the band saw blade will stop promptly. In addition, the brake is applied at the same time as the switch is turned off with the motor direct drive pulley. If equipped with an optional signal lamp tower, you can visualize operational situation of the machine far from a distant place in the work place.

Motor direct drive pulley

Compared with the belt drive pulley, there is little power loss and vibration with the motor directly connected pulley. The quietness performance has also been dramatically improved with it.

Space saving design

With the compact size of 870 × 1080 mm and space-saving design, it can be a big success even with a narrow backyard.

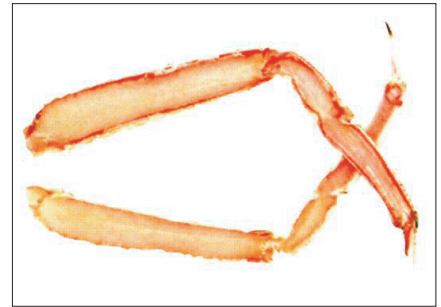
Sanitary and easy maintenance

Removal of the band saw blade can be done with a rotary type tension handle, and removal of the feeding fish belt can be done easily with a one-action lever without any tools. Every day inspection, cleaning will not become burden for operators. Because all of the materials and parts including wheels (pulley) are made of stainless steel. So, it is hygienic and strongly against water, salt and rust. Also, since the product belt is anti-bacterial, it is very hygienic.

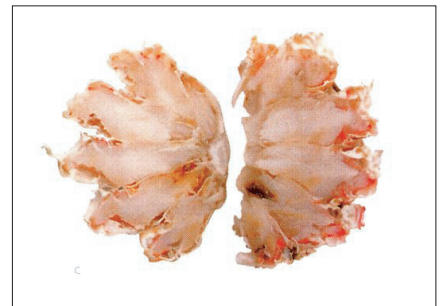
Meet customer's needs and inquiries

You can choose the type of saw blade that is most suitable for your application. We also accept specification changes to meet customers' needs such as signal lamps, alarming device for door closure forgetting or band saw blade tension verification devices.

Cutting sample



Crab legs



Crab shoulders



Fishes

Specifications

Max cutting height	145mm
Cutting thickness	10mm - 70mm
Feeding belt size	76 x 4.6 x 1295 mm
Table size	550 x 1080 mm
Dimensions (machine)	870 x 1080 x 1970mm
Weight	360kg
Power source	200V 3-phase 50/60Hz
Motor (bandsaw blade)	2.2kw 4P
Motor (feeding belt)	0.2Kw 4P