

AUTOMATIC CRAB LEG CUTTER

SH-2C

Safe and Efficient cutting of crab legs.

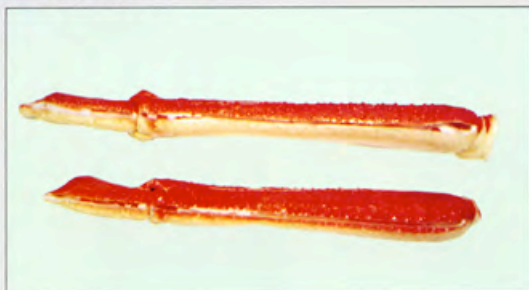


AKIYAMA

AUTOMATIC CRAB LEG CUTTER SH-2C

The SH-2C will cut any size crab without adjustment.

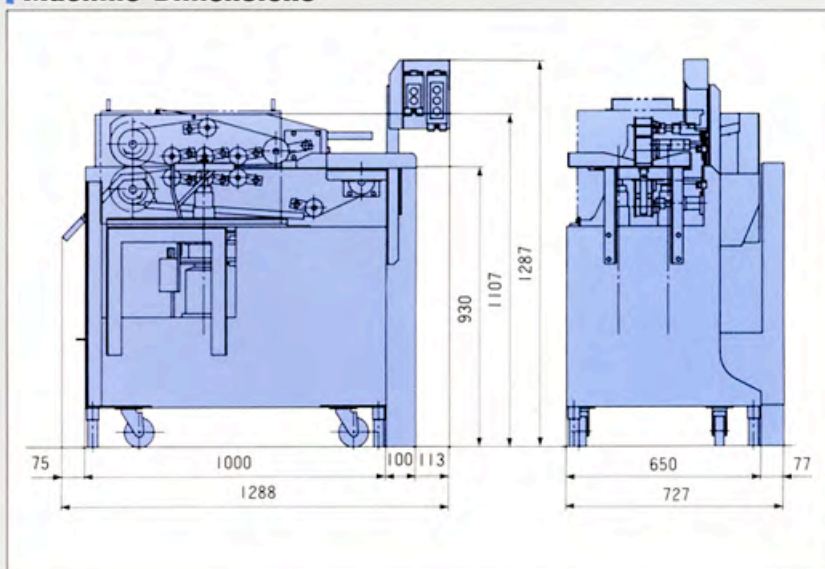
● Samples



With the use of an Auto-Centering Device the machine cuts bent crab legs as well as varying thicknesses and sizes.

- With the SH-2C's depth control mechanism legs can be cut without damaging the meat.
- Constructed of Stainless Steel, the SH-2C was engineered so that wash down and maintenance are simple.

Machine Dimensions



Specifications

Max. Product Size (H×W)	50×50 mm
Processing Capacity	Bairdi Crab legs 200kg/h
Cutting Depth	1.5mm 2.0mm (Desirable cutting depth to be adjustable)
Feeding Speed	8.8/10.5m/min
Dimension (W×L×H)	1,288×727×1,287mm
Weight	300kg
Power Source	200V 3 Phase AC 50/60Hz

25.4mm = 1inch

AKIYAMA

Akiyama Machinery Co., LTD.

1-30-10, Kita-Mariko, Suruga-ku, Shizuoka, 421-0106, Japan
 TEL. +81-54-259-2779 FAX. +81-54-259-2995
<http://www.akiyamakikai.co.jp>